

RARE (3)

Stixpes cryptogamae (Vogels —
Rhenanae). Vol. 3. 1812

B-10121

Brittle and Fragile.

53
RARE

Indian Botanic Garden Library
BOTANICAL SURVEY OF INDIA

CLASS No.

BOOK No. *STI-C*

ACC. NO. *B-10,121*

*Herbarium of historical nature
Herbarium*

arranged by Herbarium



STIRPES CRYPTOGRAMMÆ

VOGESO-RHENANÆ;

Q U A S

IN RHENI SUPERIORIS INFERIORISQUE, NEC NON

VOGESORUM PRÆFECTURIS

COLLEGERUNT

J. B. MOUGEOT Rruyeriensis Med. Doct. et C. NKSTLFR Arcrcntinensis
Pharmacopola, Schola; Pharmaceut Argentorat. Professor adj.

— DEUS O^A M. et nature nilii) frnslra creavertt.
Posteros tamn tot invmturos fore **militates** ox tnuscis
ftuguror, jjuot ex reli^uis Tegetahilibns.—

Linn ; Cui bono ? hitmen : Acad: torn. III. p. &4%.

F A S C I C U L U S III



Handwritten text in Cyrillic script is visible on the page, appearing as faint bleed-through from the reverse side. The text is arranged in several lines and includes the following words and numbers:

- 2409
- 1022
- 1023
- 1024
- 1025
- 1026
- 1027
- 1028
- 1029
- 1030
- 1031
- 1032
- 1033
- 1034
- 1035
- 1036
- 1037
- 1038
- 1039
- 1040
- 1041
- 1042
- 1043
- 1044
- 1045
- 1046
- 1047
- 1048
- 1049
- 1050
- 1051
- 1052
- 1053
- 1054
- 1055
- 1056
- 1057
- 1058
- 1059
- 1060
- 1061
- 1062
- 1063
- 1064
- 1065
- 1066
- 1067
- 1068
- 1069
- 1070
- 1071
- 1072
- 1073
- 1074
- 1075
- 1076
- 1077
- 1078
- 1079
- 1080
- 1081
- 1082
- 1083
- 1084
- 1085
- 1086
- 1087
- 1088
- 1089
- 1090
- 1091
- 1092
- 1093
- 1094
- 1095
- 1096
- 1097
- 1098
- 1099
- 1100

•EicKum datbwm <i>Alb. et Schv.</i> N ^o .	285.	Le?kra sericea <i>Jlrdir.</i>	K ^{ff}	225.
jEcidium <i>Ritmicis Perso.</i>	286.	Lobaria perlaia <i>De Cand.</i>		a53.
•/Ecidimn <i>Rumicis. v. Grossuiarne-P.</i>	287.	liVcopodium <i>clavatont Lino,</i>		203.
Asiridiiim <i>oculcamm Swartz</i>	206.	Marchantia <i>conica Linn.</i>		S47-
Asplcnium <i>R»ta nuirana Zum.</i>	207-	Neck era •viticulosa <i>Ucdtr.</i>		
Barbula <i>cfpvolpta ff«fer. *</i>	218.	Widularia <i>sLriata Bid Hard</i>		£85.
Boletus <i>percnnis Linn,</i>	295.	Osnmnda <i>rrgalis Linn,</i>		204-
<i>Bryum alpinism Linn.</i>	221.	Opegraplaniacularis, <i>vnr. a, et g, Ach.</i>		a65-
Br/um <i>bimtini Shrebr</i>	223-	Pii toll aria <i>veniosa De Cand*</i>		£58.
Bry'um <i>niiians SchreOer</i>	22.0.	Peziza <i>pitliya Perso,</i>		298-
Bryum <i>ttnbinaUim Swartz</i>	S.2.2.	PeUJdea <i>aphlhosa slchar.</i>		aS c-
Cb'donia <i>molanformis Hoffhu</i>	s1,99,	Pcltideit <i>resnpiriata sjthar.</i>		252-
Conferva <i>fluviatilis Linn,</i>	300.	Fbyscia <i>cbrysopluhiilma De Cand.</i>		254-
Cornicutaria <i>jobata.e* var. b. Be Catnf,</i>	299-	Polypodium <i>Dryopt^ris Litfti. p</i>		205-
JDematium <i>brrlwrum Perso. •</i>	217.,	Polystigma <i>fnlvum Perso.</i>		071-
Dicranum <i>taxifolium Srhrad.</i>	216.	Polys tigma <i>iiiLnim Per so.</i>		£70-
Dicranum <i>viridulum Swart*</i>	211.	Polytrichm <i>ajpmum Linn.</i>		21j-
Didymotion <i>capiHacenn Sjtartz</i>	213.	FLcris <i>crispa Snartz</i>		208-
DidvmoLnn <i>flxicaule Schleiclur</i>	212.	Plerngomum <i>Jiliiorme Ilediv.</i>		£10.
Didymndon <i>loagirostram WietMehr</i>	SOL	Puccmin <i>gnimiiiis, T. sJrwtdinis P.</i>		£,9.3.
E< iiseUin <i>arv*tisfi Linn.</i>	202.	Puccinia <i>Jncarias De Cand.</i>		
Equisetnm <i>psJMtre te».</i>	258.	Puccinia <i>Jlosae De Cand.</i>		£(00.
Fotitiufilis <i>aulifyrrtiim Lintt.</i>	250.	Puccia <i>cristalliiia Linn.</i>		£48,
Gvrophora <i>arosa Ackar.</i>	249.	SdfFoderma <i>cerviniin Perso.</i>		£82.
Gyrophora <i>proJwsejdea, a- Achar*</i>	296.	Spliseria <i>/E^opodij Perso.</i>		281.
Hydiiium <i>conctereens Perso.</i>	226.	Spliseria <i>deusta Perso.</i>		276-
Hy pnum <i>aliirtinum Lutn.</i>	236.	Spliseria <i>iimbriata, v. Carpini Perso.</i>		277.
Hypnum <i>albicans ^tek.</i>	229.	Spliaeria <i>frngiformis Perso.</i>		£70*
Hypnum <i>cupressifoJinc Linn.</i>	537.	Sphaeria <i>Hypoxylon Perso.</i>		272.
Hypnum <i>Bi cnspidattun Linn.</i>	228.	Sphaeria <i>metogramuia Perso*</i>		274-
Hypnum <i>rJicifium Linn.</i>	252.	Sphaeria <i>nivea Perso</i>		27
Hypnum <i>loreinn Linn.</i>	250.	Sphaeria <i>puclia Perso.</i>		273.
HVpnum <i>^duquein Linn.</i>	251.	Sphaeria <i>ribesia Perso.</i>		280-
Hypniun <i>ri»Minsium II'eb. et Ulnhr</i>	253.	Splut'ria <i>tulja'formis Per.w.</i>		262-
Hypniun <i>sqDarroaan Linn, v. minus.</i>	254.	Sphserophoron <i>cnralloides Perso,</i>		263.
Hypimm <i>stellatum Search.</i>	255.	SphH/mpLioron <i>fragile Perso.</i>		209-
Hypnum <i>ttiffuettinn Linn,</i>	367.	Spli-c(i;iiii) <i>squarro*nm Perso.</i>		297-
HjstprJum <i>Braxini Perso.</i>	see.	Thflrj Uora <i>tcitPStrb Ehrh.</i>		
Hvsleriun <i>pnlicfW Perso,</i>	256.	Thelotrema <i>lepadinnin a. slchar*</i>		£84.
Imbricarui <i>acetabcloB De CamL</i>	255.	Trichia <i>clavata Ptrso.</i>		215-
Imbricaria <i>raprr;ia De (ttui.</i>	241.	Trichostnmum <i>iaicil-nlar Schrad.</i>		214-
Jimgermsnina <i>albiouw Linn.</i>	244.	TrichistmJiiii <i>patena Ifedfr.</i>		a90.
Juifjermnnni;t <i>ciliiiiis Lu<n.</i>	245.	Uredo <i>cruciferamM De Cand.</i>		a88.
JuAgomooBia <i>dilatata Linn.</i>	245.	Credo <i>Jine;tris, v. fvumenti Perso.</i>		889.
Jimgertnannia <i>ezaai^inata Ehrh.</i>	242.	XJrcdit <i>linearis, v. Poiypodii Perso,</i>		29r-
Juogermxmia <i>Fnsckii II'eb. tt Mvhr</i>	S40.	Urcdo <i>seyctnm Perse.</i>		£f0*
Jjingertuftoma <i>inci&a Schrader</i>	a3g,	Usnpa <i>Borida Hojffm.</i>		264-
Jngennannifl <i>piogais Linn,</i>	S46.	Variolaria <i>citmniimis, var.a, elb. Ach.</i>		26g.
Jusgenpannia <i>tamoriscifolia JLinn.</i>	224.	Xyloma <i>populinum Perso,</i>		268.
Leskeu <i>poljcarpa* J5.Vir't.</i>		Xyloma <i>salijjiuim Per so,</i>	j	



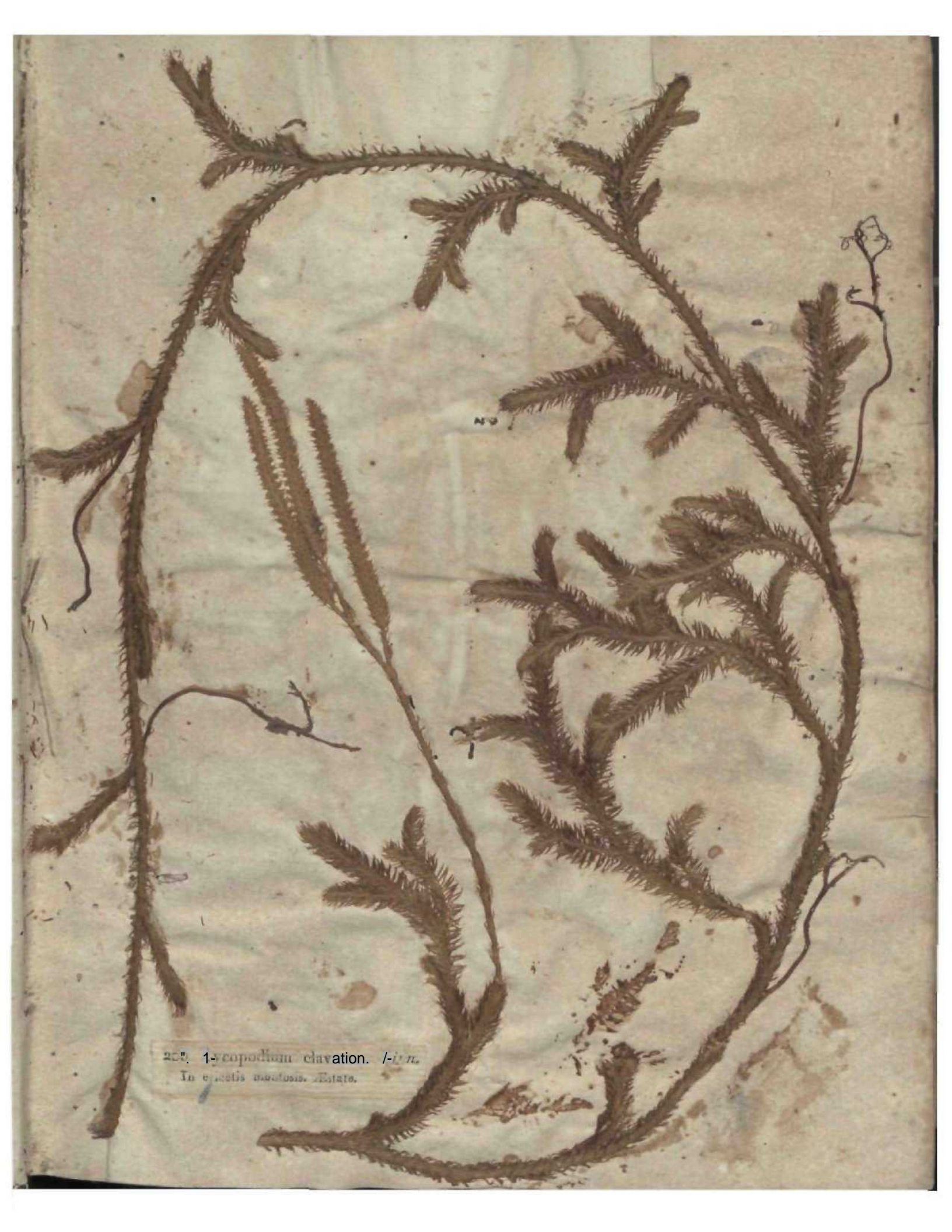


291. *Equisetum arvense* Linn.

Inter iegotei, Vero, fulia -Estate.



202. *^ uisetum*] vihisvc. *Linn.*
In Josjia .[.ratisqus palcdoiis. *Æstato.*

A dried botanical specimen of Lycopodium clavatum is mounted on aged, yellowish paper. The specimen consists of several dark brown, woody stems with small, scale-like leaves. The stems are arranged in a somewhat circular pattern, with some branching. The paper shows signs of age, including foxing and staining. A small, faint number '49' is visible in the center of the page. A small, thin, curved stem is also visible on the right side of the specimen.

207. Lycopodium clavatum. Linn.
In ericetis montanis. Est. 1760.



204 Osmunda fragilis. Linn.
In nemorosis humidis. Aestate.



05. **Polypodium** *Dryopteris Linn.*
IP loci* pottocil utnbrpiij, */EiU(o.



46. *Aspidium aculeatum* Stvartz Sjn. *Filic*, 53.

Polyjuutlivita iculeafum Linn,
la rylvii nio/iuiis, Æstate.



207. *Asplenium Ruta muraria* Linn.
In muris, Estate




I

8. *Pteris crispa* Suxtrtz Syn. *Filic.* 101.
OiniuniKi cri;p(*Linn**
tnler saxa Monti Saiionti Suheüsis «t circa Gtrardmtr. Au gusto.



209. Sphagnum squarrosum Pers. et Hedw. Sp. Musc. 3, pl. 1. p. 15. t. 4.
In sylvarum paludosis. Æstate.



210. Pterogonitirni !liforme Hedw. Sp. Musc. Suppl i. p. 100.
Il_vii.:nt KljfoTm* Timm. II. Xegapi Iit.
Ad Fjgi (runm in ijlvw «iittoribus, Julie.

f.

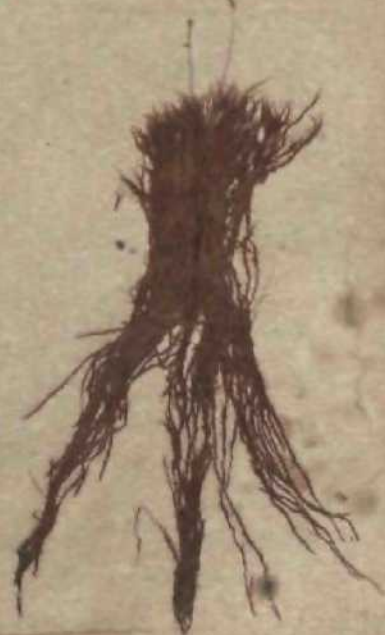




211. *Didymodon capillaceum* S»*rtz *Musc. frond.* S₁/rr P, 28.
Bryum capillaceum Dicks. *Cynodontium capillaceum* Hedw.
Ad montia Cashelli Befordensis, copiosa. Maio.



2:*. *Didymodon longirostratum* fth. et Mohr *Crypt. germ.* p. 155.
Didymed. rostratum Wahlb. *Fl. Lapon.* exclus. synonymis *Silv. hinc it Schwarg.*
In sylvis montosis, ad terr. Q. et Lruuus ptillidos. \ ero.



213. *Didymodon flexicaule* Schleich. *Crypt. Helv. exs. Cent. 5. 14.*
Cynodontium flexicaule Schlegel in *Hedw. Sp. Musc. suppl. 1. p. 17. t. 29.*
la ru; iLi« (calcareis) Vallis Birs. Estata.





214. *Trichostomum patens* Hedw. *Sp. Musc. Suppl.* 1. p. 151. t. 57.

Bryum patens Ficks. *Dicranum patens* Smith.

Ad rupes inundatas Mont's *Bulleon de Servance*. Junio.



215. Trichostomum fasciculatum Schroder Spic. 1-1, germ, p- Ci.

Bryoi Iy pi, oitie* it. linn.

Frequens in *tut Vegetorum humidis. Vere.



nr 215, non Trichostomum fasciculatum
</CJ Trichost. protendens Braun.



at6. Dicnum viridulum Swartz *Musc. froni Suec p- 31.*

Bryum viridulum Linn.

In umbrosu ml snfet, in^uo ierra nuda sylvarom. Vera et Autumnu.

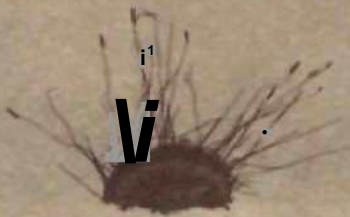


Microgramm taxifolium Schradtr.
Hypndra taxirolini Linn.
ID banidia «tqu» ubnitU *d turtjm, Vers.

ftiS. Baibula revoldta *ITEiiv*, ty. *Muse. Suppl* r, p, 127. tab. 3a.

"l'm Inla rrvolutt *BriJ.*

In maris, ad aggeres, frequens, vere*





2ig. Polytrichum alpinum Linn.
In rupibus siliis mult. /ieckr, Sillonii Sldztttis t **C. Aestate.

lao. Brvnn ntlLics Sr/irctrr Spirt/ 81.

Murom •entans Fi.);;. 1!.. germ.

In uctit, jroriltbu. ^ ad vias ijlvirfln. Æstate.



22i. *Brytim alpinran* Linn.
A& rupei irr'gua\$ in muiitu.ia , Juiiu , Julioqo.





220. *Bolmifurbinatum Swartz Musc. frond. Sutcl. p. 43.*
condensum Hedw. Sp. Musc.
1° •reoi! .dia. Junio.



225. Brynm binnffl Schreber Spic. 7. 85.

musc.

In paludosis atque pratis uliginosis. Aestate.



224. *Leskea polycarpa* Ehrh. et Hedw. Sp. Musc. p. 25.
Hypnum medium Dick. ex Smith Fl. brit. p. 1280.
Ad radices truncosque arborum in locis udis et umbrosis. Estate et Autumno.



5. *Leskea sericea* Hedw. Sp. Musc. p. 228.
Hypnum sericeum Linn.
Ad arborum truncos, inquit. Verc.



226. Kypnum ahiotinuni *Linn*,
In sjlvii et ilerilibui, i«(l uique'lutn aisquo thecis.



227. *Hypnum entpliditium* Linn.
in pralu Jiomidij. Vero.



22.8. *Hypnuna Jilicinum* Linn.
In rupibus humidis, aetjua arBD»ii tylrilicij. We,





229. *Hypnura cupressi* forme *Linn.*



230. *Hypnum aduncum* J. *itin.*
In paludibus circa *Bruyerium*.



251. *Hypnum rugulosum* *W. & A. Crypt. germ. p. 707.*
Hypnum rugosum *Hedw. Stirp. Hyp! + r. 13. fig. * 50 bunt.*
In sterilibus montosis, sed hucusq. A* m tkttm rtdat* aocas--- licuit.





252. *Tijpnum loreuin* Linn,
In *opusc. botan. et zool.* 1760.






235. *Hypnum sparrosimi* Linn. var. *h. minus* Dill. Mitsc.t. Syf. 39.
la numerosis caulis, ad scopos, ubique, aed r&io cum thcis. Vera.

254. Hjpmmi Stella turn *ScJtrcb. Spirit. 92.*
In jialuiilius et r;ratís tutfuii). Junio.

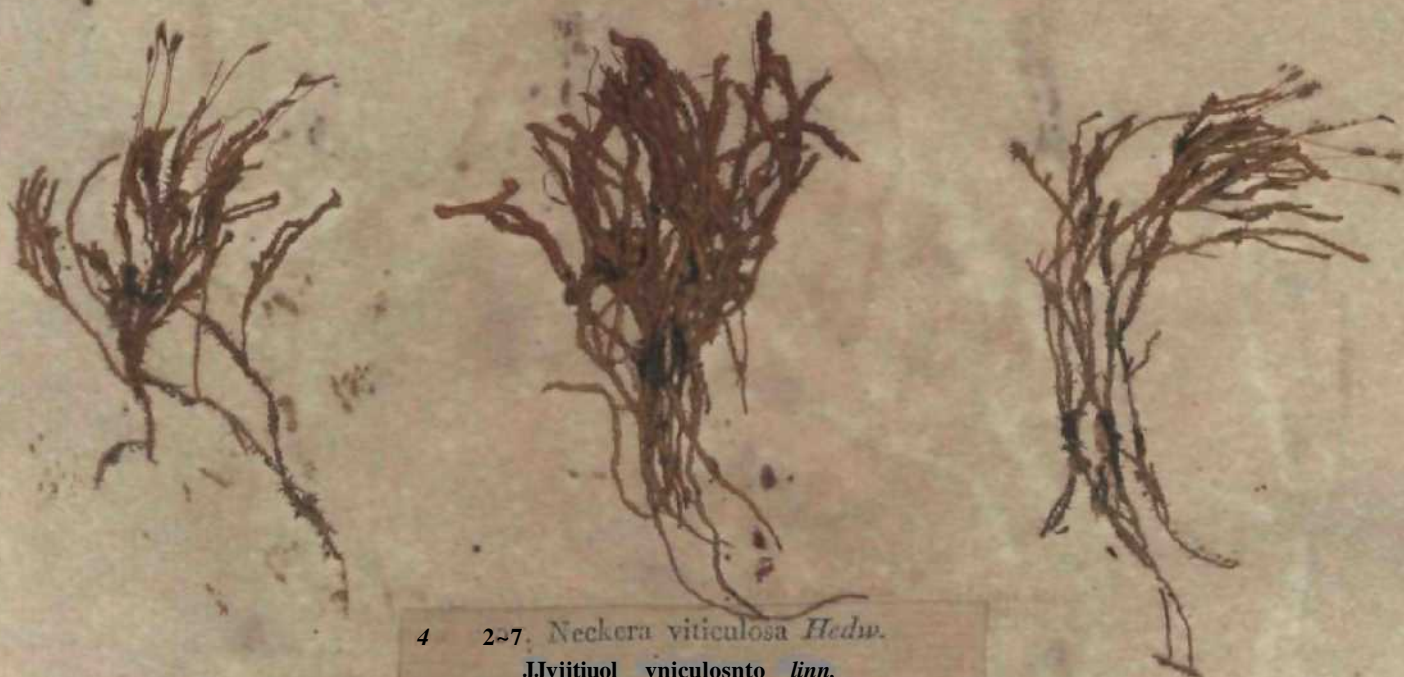




i35. Hypnum tripteron *Linn.*
In sjlvil umbrois. V^{ord.}

The image shows several dried botanical specimens of Hypnum alhicaus. One specimen is prominently displayed in the lower center, showing a cluster of dark, pointed leaves and a central stem. Above it, there are several smaller, more fragmented specimens, some showing the characteristic fan-like structure of the leaves. The specimens are pressed onto a light-colored, slightly textured paper background.

236. *Hypnum alhicaus* T&A*. il/c/A, *Musc. p.* 18c.
In aridis, sabulosis circa *Bruyerum*, primo Vere.



4 2-7. *Neckera viticulosa* Hedw.
JJyjtuiol vniculosnto *linn*,
A & arbutuai liunco) , ilique *maris*. *Februario*.



238. Fontinalis antipyretica Linn,
la tivulii ut aijui» tiagaautilnts. JL*W>.



2^J]- JtJuncus germanicus Linn.
Ad scaberrimos, in quo sylvaram humidis. Maio.



2; i. *Jnngei-nonna albicans Linn.*
In humida et umbrosa sylvarum. Ver.

242. *Jungermannia Funckii* Web. et Mohr *Crypt. germ.* p. 422.
Jungermannia excisa Funck *Crypt. excis. Mont. pinif.* 118.
In sylvis montosis, ad semitas in terra nuda, Vera.



)



a.



a.



243. Jun[^]ermanaia emaqjoata Ehrh.

W.П. «. w'ridii, fn rm-uioru.il lazu[^] Tar. Z. fusca , ai terraz.



b.



b.



~~Aspermatum~~ ciliaris Linn.
!a ligui* [>utridii Tiuruai , et ad ferram. April!.





245. *Liirgermannia-tlitatata* L. *et* Spreng* *An. Sac. JVcit. i, p. 2* «_ t. 4+
ID arboruru truaci*. Hyemo.




246. *Jungermannia tamariscifolia* L. et. Spr. An. Soc. Wet. 1. p. 21. t. 4.
In rupibus atque arborum truncis. Vere.



247. *Marchantia conica* Linn.
In speluncis, atque nemorosis humidis ad roces. Aprili.





2.8. Kiccia eruta Hin-a Linn.
In sola piagui, ad piiciua; Autumno.



Ejjj. **Gyrophora** proboscis •> <* *Achwr. Lichen, uni?. p. 220.*

Lico *proboscida* Linn. *Tajbilocana* probwefdaa, g. Dr *Candl*

I an prol>ncidau» Linn. tTajbilocana probwefdaa, g. Dr *Candl*

varieta consideranda.

in (jus



250. *Gyrophora erosa*, *a. Achar. Lichen. univ. p. 224.*
Lichen erosus Weber. Umbilicaria erosa Hoffm.
Ad saxa Jugi Vegesorum, toto anno.



251. *Peltidea aptiliosa* ^{^char.} *Lichen* unit?*, p* 5iS.

Licjjon r-ph!lios'ts Linn,

Supra turr*m at mujcoi in ryivh montoiij, *Estato.*

252. *Peltidea resupinata* Arhar. *Method. Lichen. p. 289.*

Lichen resupinatus Linn. Nepl. tam* Breijii...» jtkmr. Zühr*. unia.

Ad arborum truncos, in sylvis edicibus. Etate.



255. Lobaria perlata De Gand. Fl. = 1091.

-Lichen foliatus L. M. Pjrenelia perlata Achar,

la. ii. ls in acis que arborum Est. te.



m

т^^wifc^

254. Physcia clin-spluthalma De Cand. !'/. <r_d//, 1885.
t'ul en chrysophthalmus Linn. JJ«rori clirywpbttaJma Achtr. Zichen. univ.
in ramii Pruai sjino*a> ot Craitegi uxjaiautfi;s, Ver«.

255. *Imbricaria caperata* j) c Cand, FL Zll ro55
Lichen caperatus ... a *caperata* Achar.
Ad saxa ... truncis.





56, *Irabricwia acetabluni* *De Cand. PL gall. 1062*
Parmelia corrngata Aaiar.
Ad tr«ocos (Juarcus, Fra^ini atquo Fagi,

257. Tfielorema lepadinum , a. Aekar. Lichen. uni». p. j. 12.
Teflon iticlnsni Engl. Bvt. an Volrari* tmncigsqa s¹ £* c'uv(d;
Ad corticem Fagl at *Adietis.

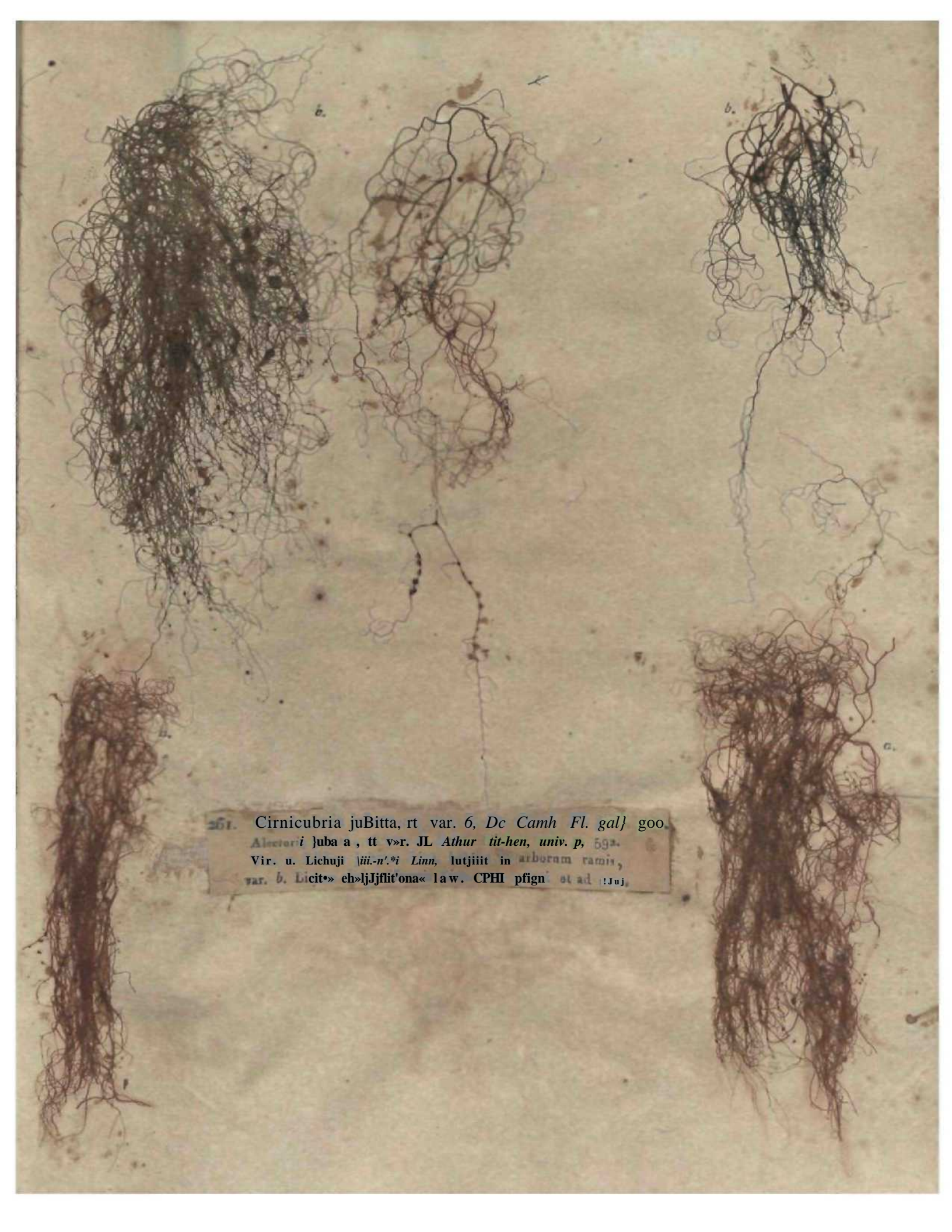


"fB. Patellaria vptosa DtCand. FL gall. (jCio.
Lichen TBntOjn* LtJtt, Leranora ventoia jjehtir. /UVH-TI, unlv.
In iirmmis V^ogcsurmii rupiLmi venty afflatis.

259. *Cladonia mibriforttis* Roffin. M, *Lerm* „
C«—J« p»pil!»n*, 5, motvriřvnnis ^har Lich'S 117-
la encwii moniosij ad terram. univ.



260. *Usnea florida* H. & S. Achar. De Cand. Ft. ga JK qoi.
Lichen flondui Linn.
In wpimonlis ligaci, et td corticem arborum.



261. *Cirnicubria juBitta*, rt var. 6, *De Camh Fl. gal} goo*
Alectori juba a, tt v»r. JL *Athur tit-hen*, *univ. p. 59a*.
Vir. u. Lichuji *iii-n'i Linn*, lutjiit in *arborum ramis*,
var. *b. Licit» eh»ljJflit'ona«* la w. CPHI pfign. et ad !Juj.



262. Sphaerophora aralloides Pers. ! A. har. Liches. univ. p. 585.
Lichen globiferus ~~Sphaerophora~~ globifera, ~~Pers.~~ Fl. gall.
Ad caudices Pinorum in sylvis editioribus, inque saxis. Æstate.

265. *Sphaerophoron fragile* Perso. et Achar. *Lichen.* n^o/y. p. 535.

Licetj fragilis Linn. *Sphaerop* borni caespitosa 7V CⁿJ. 77, gall.

Ai rujwrt asaiura Mohneck, Bressoir, in VJgenis.





a.

264. *Variolaria communis a. orbiculata et b. faginea*. 'Lich. un. -p. 321
Linn.

In i articulo a. j. umm , pt<nanita Fagi.



b.

265. *Opegrapha macularis*. a, i: v. g. *fagina sick. Licit, uni p. 247.*
Var. c. *Lichen macularis*
Juniperus Quercus; v. g. **Lkh, ragotuj** if, ^'. Opsgr. *fagmea Purs, ia Fagi i. cortice.*

r

s€G. HysteriuHJ paUcans *Per.to Syn. Fung. p. gf*}.
Ad quartuurn caudices.

267\ Hysierimn **Fraxini** *Perso. Syn. Fung. p. ICO,*
Ad Fra*fm, Pcpuli, Acoru, ratmu «-J«»—



263. *Xyloma salignum* Perso. *Syn. Fung.* p. 106.
In foliis emortuis *Salicis capreae*. Hyemo.



269. *Xyloma populinum* Perso. Syn. Fun. p. 107.
In Etih «fidis Populi Tremulae, Hyeme.



270. PolystigTM» Tithruin *Perto. in Litteris.*
Xylem rubrom *Ptrto. fyn. Fung. p. ic^*,
III mlis I'runi Jonit;il[i..c ot »pinot!E₁ Autuiuno.



§7i- Polystigma fulvum Perso. in Litt. ens.
In foliis PrunJ P*Ji, Autumno.
ViJJo [precedenti P*Ji, et fatith ejm varietas.



H



7- Sphaeria Hypoxylon Persa. Syn, Fung. p. 5.
~~Sphaeria Hypoxylon Persa. Sphaeria Hypoxylon Hoffm.~~
A. [iruni:« puriciui, et ad alicurum iadicos. Hyoma.

275. Spti-Eria frigidiformis Perso. Syn. Tung.p.g.

Ly Co portion variolamm Linn.

Ad Lrajsoi figitigs semiputridos.

274. *Sphaeria melogramma* Perso. *Syn. Fung.* p. 15.
In ramis Fagi sylvaticae.

275. *Sphaeria ribesia* Perso. *Syn. Fung.* p. 14.
In ramis exsiccatis Ribis. rubri. Hyemo.

276. *Sphaeria deusta* Perso. *Syn. Fung. p. 16.*
Ad stances putidos, Hyema.



ny. *Sphirria finibrialis*, var. *a*, *Carpini Perso. fyn, Fung p. 5&*
IB fcliii iilLtc TirjdJtai el Msiciatis Carpini, Autumpg.



J

278. *Sphaeria nixa Perso. Syn. Fung. p. 33.*
In cortice Populi Tremulae. Hyeme.



279. *Sphaeria pulchella* Perso. *Syn. Fung.* p. 45.
Sub epidermide ramorum et caudicis Pruni Corasi dejectae,



280. Sphaeria tubaeformis Persa. Syn. Fung. p. 87
In foliis emortuis Alni glutinosae, Carpini etc. Hyems.



281. *Sphaeria Ægopodii Perso. Syn. Fung. p. 89.*
In foliis Ægopodii Podagrariæ, Autumno.

282. Sclerocoma ceruinum Perso. Syn. Fung.p. \ 56,
hy(-)lflr(Jon cervinum J.inn,
Fungus ~~abietinis~~ abietinis,



t

283. *Nidularia striata* Bulliard et de Cand. Fl. gall. 723,
Lycium, str. Hoffm. et Pers. so.
In lignis putrescentibus. Autumnus.



284. *Trichia clavata* Perso. *Syn. Fung.* p. 178.
 In ligno putrido. Vere et Autumno.





285. *J. c. ainmcUuiv.mLibert. et Schwei. Consp. Fung.p. isr, t. 5. f. 3.*

In ramis languentibus Abietis pectinatae, Æstate frequens.

Rami quibus Æcidium hoc insidet, colore spadiceo e longinquo, distinguuntur, et a monticolis Vogasiensibus Hexenbesen, Pâneurs de Sotzé, (Balais des Sorciers

Fungillus, v»lds nllnw «» f»^{rian} varietas Jlcldii PinI, av Igco nalaii orU, folia
 A;idio elmiw ob,ia Jan^flscenti* nempo, qaam ilia Tiui jylFestri* quibus
 Æddium Pioi iuiidei, viritlia et sum.



286. *Æcidium Rumicis* Perso. *Syn. Fung.* p. 207.
In foliis Rumicis acuti, obtusifolii, aliorumque. *Æstato.*



287. *Æcidium* Rump's, var. *b. Grosmlaritr* Persa. *Syn, Fung.p, S07,*

288. *Uredo linearis*, var. *a. frumenti* Perso. *Syn. Fung. p.* 216,
In foliis graminum, Æstate.



289

U. in ...
to f»wdib«« Poljpodu Drycpteriiis at iVagiw , Samo.




v~



290. Ur^o cruciferarom *De Cand. Fl gall. 63fi**
In foliis Cochleariae Armoraciae, aliarumque cruciferarum, Æstate.



29 i. Ur-sJo scgetTim *Perso. Sjrn. Fung. p. 224,*
In ipici* griEninatn coroliuta, Estate.



292. *Puccinia graminis*, var. *Arundinis* Perso. in *Litteris*
Uredo striola Strauss *Annal. Soc. Wetterav.* 2. p. 05.
In foliis *Arundinis Phragmitis*. Autumno.



295. Pucciniallosaj *De Cand. Fl. gall. 581,*
Puccinia inucroiHla, n- ROsi Perso.
la fulii» Husorum, AuLumio.



r

,04, Purrinl- Kcan* *Dc CanJ. Ff. gall fo3.*
Jmi» Fief.-* -* a & hwei, CD1"p. J un S-F- J»
la U&k Eanaaoili F»c«rio;, prima vernatione,

295. *Boletus pereanis* Linn.
AJ t*rz*m in iylvis arenosis, Aummao.

39
T Hv<to«m cinner*«*W *Pcrso. Am. Fung. p. 55G. ex Titterla.*
In syl. «y«» .is circa *Brayerium, Aagu*:a rt ^ji.*

297. *Th. elephora* wrrrstm Ehrh- ft Perto. Syn. Fung. p. 1*65.
In ~~Autumno~~ Autumnus.



298. *Peziza pithya* Per so. lean, rt Oder. *Fung.* p. 43-[^] II. f. 2
la r.ijnuij (it-jocii* Pim" pit:**, Vers.



299. *Dematium herbarum* Perso. *Syn. Fung.* p. 699.
In foliis et caulibus plantarum majorum. Autumno.



300. *Conferva fluviatilis* Linn.
Chantransia fluviatilis De Cand. Fl. gall, 118.
Ad lapides in fluviis. Æstate.

Indian Botanic Garden Library
 BOTANICAL SURVEY OF INDIA

Coil No. fJJ » & ... Ace, NoBrlQJ & l...

Author..... Mougeot, J. R. & others

Title Stimpia cryptotomal Vogelii Nagan-

anal. qual in v. n. superioris...

Name of Book/Code No.	Date of issue	Date of Return

INDIAN BOTANIC GARDEN LIBRARY
 BOTANICAL SURVEY OF INDIA

i:

-A

